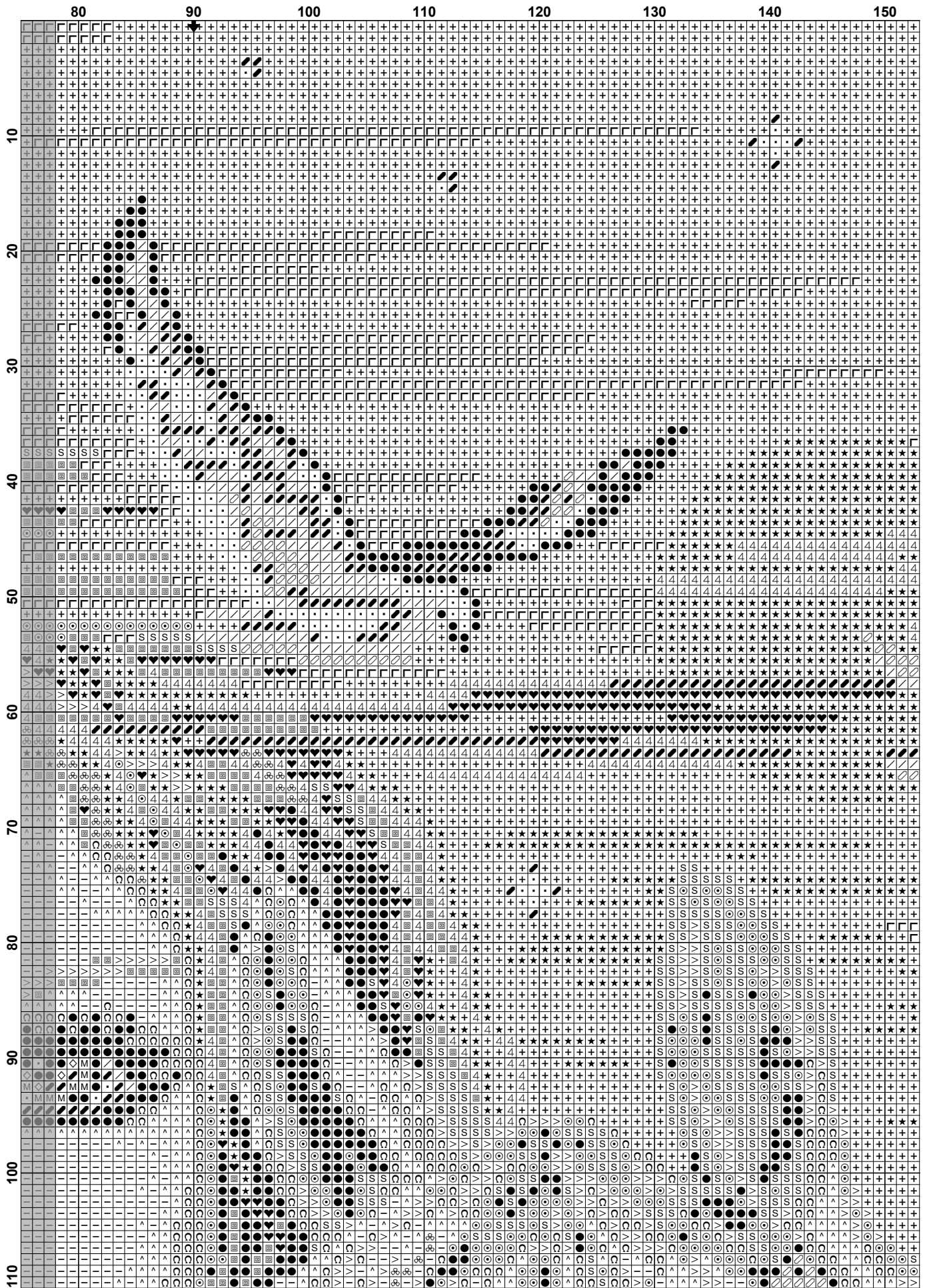
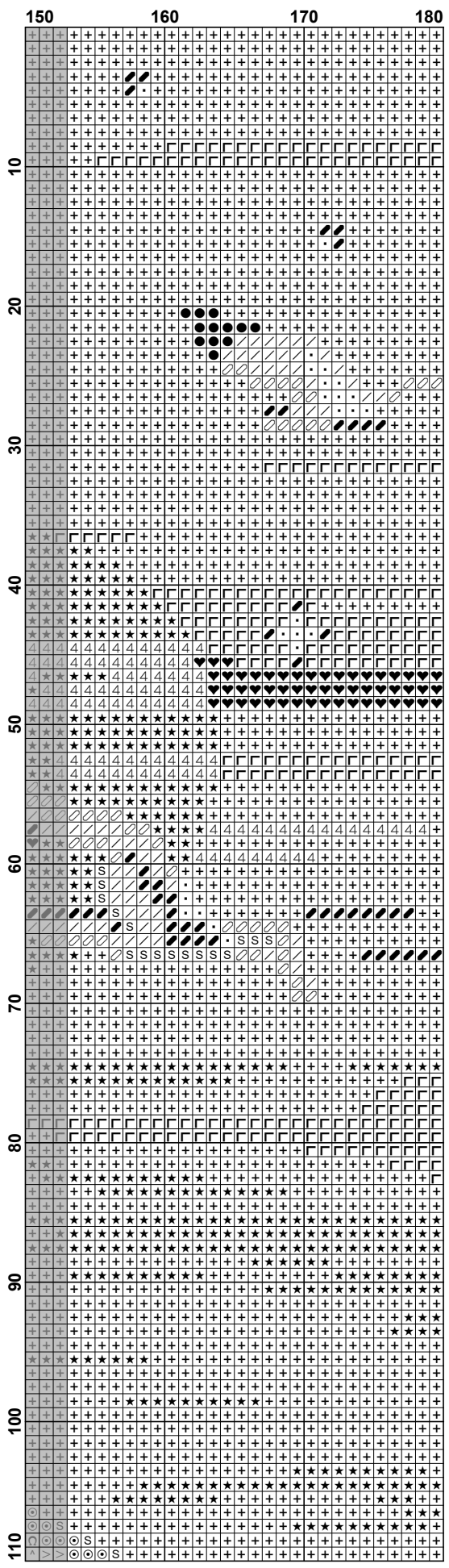


	10	20	30	40	50	60	70
10	□	□	□	□	□	□	□
20	+	+	+	+	+	+	+
30	+	+	+	+	+	+	+
40	+	+	+	+	+	+	+
50	+	+	+	+	+	+	+
60	+	+	+	+	+	+	+
70	+	+	+	+	+	+	+
80	+	+	+	+	+	+	+
90	+	+	+	+	+	+	+
100	+	+	+	+	+	+	+
110	+	+	+	+	+	+	+

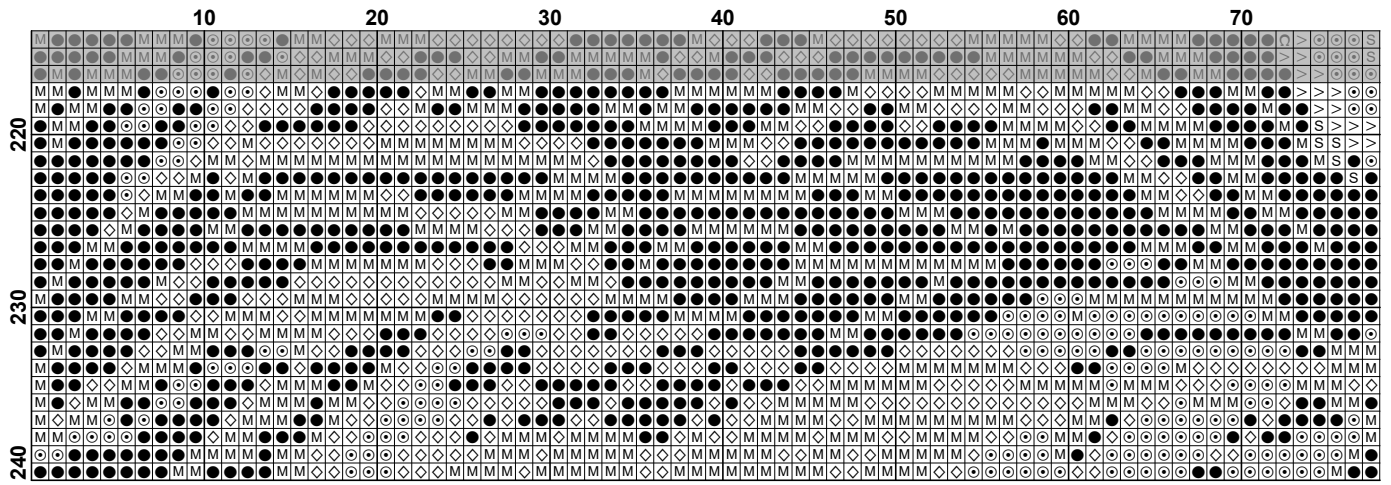


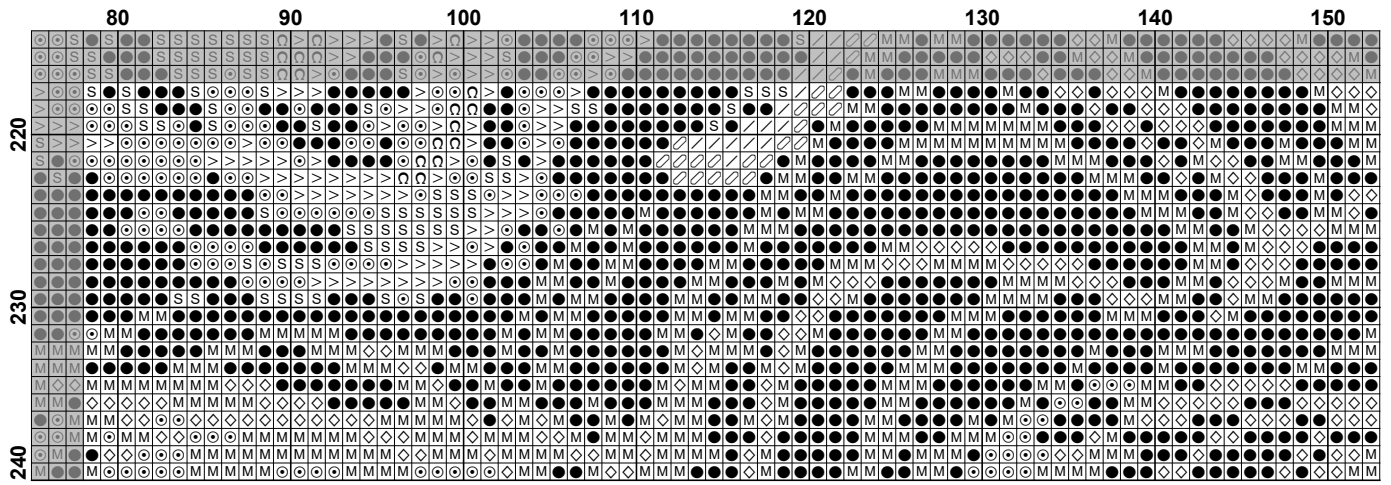


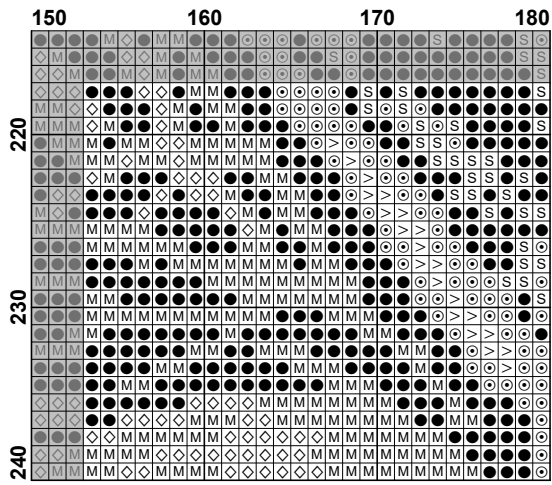
	10	20	30	40	50	60	70
110
120
130
140
150
160
170
180
190
200
210

	80	90	100	110	120	130	140	150
110								
120								
130								
140								
150								
160								
170								
180								
190								
200								
210								

150	160	170	180
110	120	130	140
150	160	170	180
190	200	210	





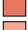



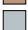



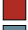




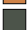











Pattern Name: Polnolunje
Designed By: GB_2-2011
Copyright: nataly
Fabric: Aida 14, White
 180w X 240h Stitches
Size: 14 Count, 32.66w X 43.54h cm

Floss Used for Full Stitches:

Symbol	Strands	Type	Number	Color
 ⊙	1	DMC	300	Mahogany-VY DK
 ●	2	DMC	310	Black
 /	1	DMC	317	Pewter Gray
 M	1	DMC	319	Pistachio Green-VY DK
 △	1	DMC	351	Coral
 ✂	1	DMC	352	Coral-LT
 ◇	1	DMC	368	Pistachio Green-LT
 >	1	DMC	400	Mahogany-DK
 ^	1	DMC	407	Desert Sand-DK
 ✂	1	DMC	415	Pearl Gray
 4	1	DMC	728	Topaz
 ⊠	1	DMC	780	Topaz-UL VY DK
 ♥	1	DMC	782	Topaz-DK
 T	1	DMC	817	Coral Red-VY DK
 +	3	DMC	931	Antique Blue-MD
 -	2	DMC	950	Desert Sand-LT
 S	1	DMC	3371	Black Brown
 L	1	DMC	3750	Antique Blue-VY DK
 C	1	DMC	3776	Mahogany-LT
 O	1	DMC	3799	Pewter Gray-VY DK
 ★	1	DMC	3822	Straw-LT
 &	1	DMC	3823	Yellow-UL Pale
 .	1	DMC	BLANC	White